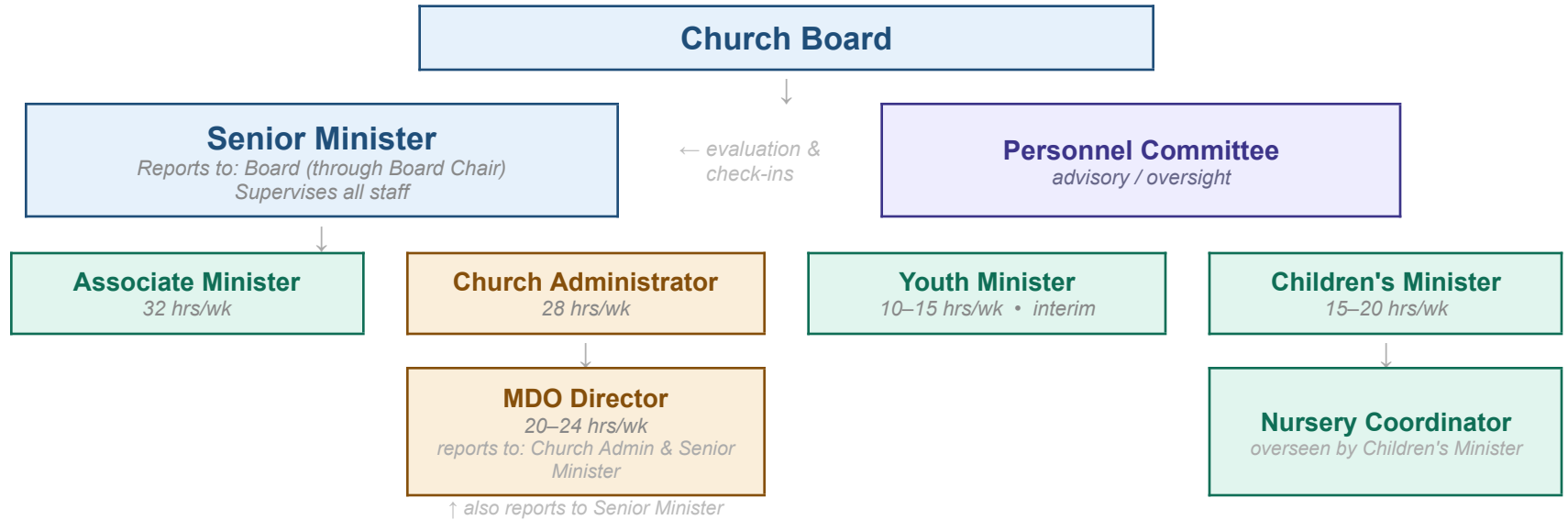


First Christian Church

Staff Organizational Chart — Guthrie, Oklahoma



Legend



Notes

- The MDO Director holds a dual reporting relationship to the Church Administrator (day-to-day operations and finances) and to the Senior Minister.
- The Nursery Coordinator is overseen by the Children's Minister for scheduling, curriculum, and operations.
- The Associate Minister's job description lists the Personnel Committee as a secondary reporting relationship alongside the Senior Minister.
- All staff are supervised by the Senior Minister per Bylaws Article VIII.A.4. This chart reflects day-to-day reporting as described in current job descriptions.
- The Letter of Calling (2017) references the Pastoral Relations Committee for annual compensation review. This is superseded by the current Personnel Policy, which assigns that role to the Personnel Committee. An updated letter of agreement is recommended.
- Job description standardization is planned as a future phase of personnel infrastructure work.